

The Whitland

3 Bedroom Detached House



This exclusive development offers a stylish range of 2, 3, 4 and 5 bedroom traditional homes, perfect for first time buyers and families.

It is located within easy reach of historic uphill Lincoln and the bypass and benefits from excellent amenities, schooling and public transport.

Homes of **Quality** and **Style**

The Whitland - a three bedroom detached home

A three bedroom family home with a spacious lounge, modern kitchen with integrated appliances and dining area with french doors leading onto an outside patio and rear garden. Downstairs cloakroom.

Upstairs the master bedroom features an en-suite with shower, a further double bedroom, a single bedroom and a family bathroom.

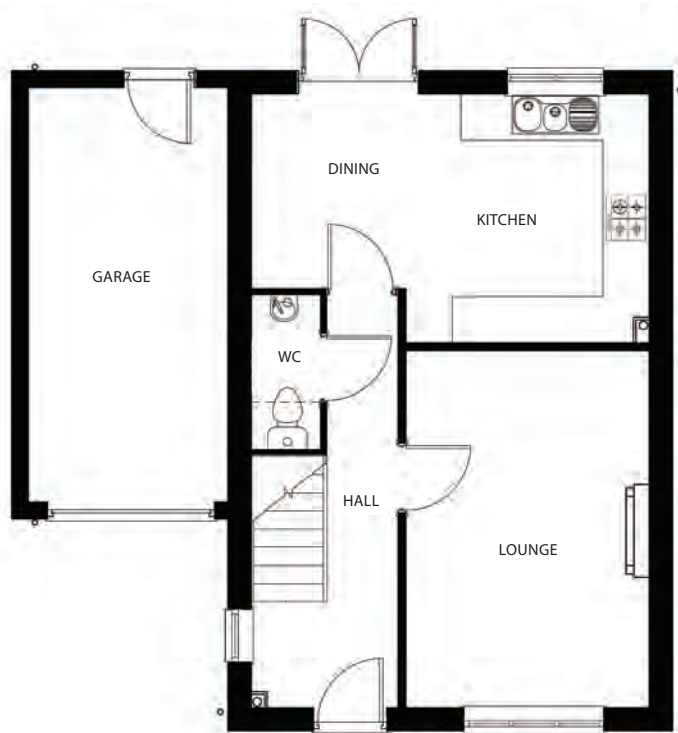
The Whitland features:

- Entrance Hall
- Lounge
- Kitchen/Dining
- Downstairs WC
- 3 Bedrooms with Master En-suite
- Bathroom
- Garage
- Fully Fitted Kitchen
- Integrated Hob, Oven and Extractor
- Integrated Fridge/Freezer
- Integrated Dishwasher
- Integrated Washing Machine
- Fully Tiled Bathroom and En-suite
- Built in Wardrobes to Master Bedroom
- Fire & Fire Surround
- Alarm
- Turf to Front Garden

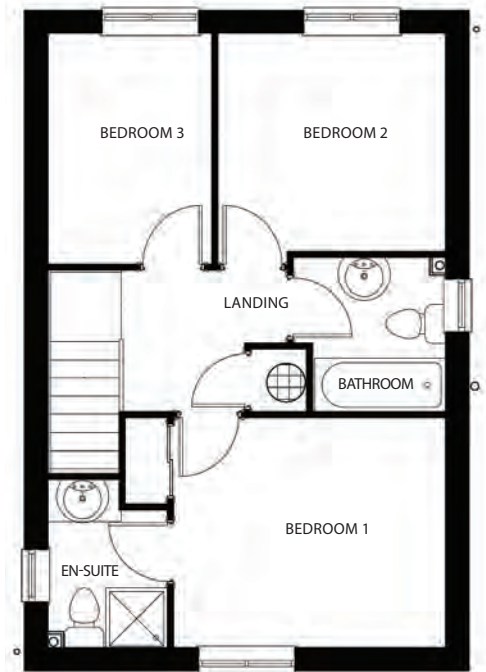
Sales Office: 01522 526 025 Head Office: 01522 512 200
www.taylorlindseyhomes.co.uk



The Whitland 3 Bedroom Detached House



Ground Floor



First Floor

GROUND FLOOR DIMENSIONS

Lounge	4.58m x 3.10m	15' 1" x 10' 3"
Kitchen/Dining	5.10m x 3.18m	16' 9" x 10' 5"

FIRST FLOOR DIMENSIONS

Bedroom 1	3.48m x 2.93m	11' 5" x 9' 8"
Bedroom 2	2.90m x 2.79m	9' 6" x 9' 2"
Bedroom 3	2.95m x 2.08m	9' 9" x 6' 10"
Bathroom	1.97m x 1.95m	6' 6" x 6' 5"

- 3 Bedroom Detached
- Entrance Hall
- Downstairs WC
- Lounge
- Kitchen/Dining
- Bathroom
- Garage

Illustrations are for indicative purposes only. Changes may be made without prior notice. All dimensions shown on this brochure are approximate and intended for guidance only.

Homes of **Quality** and **Style**

Sales Office: 01522 526 025 Head Office: 01522 512 200
www.taylorlindseyhomes.co.uk

