



MINSTER FIELDS
LINCOLN

The Romsey – a three bedroom home

A desirable three bedroom family home with single garage.

The ground floor consists of a large lounge with feature bay window making this a bright room. The open plan kitchen/dining room incorporates a wide variety of white goods and practical ceramic floor tiling. There is a very useful understairs storage cupboard and a cloakroom.

Upstairs there are three spacious bedrooms which all have TV and telephone points. The master having a fully tiled en-suite, incorporating a heated towel rail, attractive vanity units and large shower cubicle. The family bathroom is fully tiled in high quality ceramic tiling, with heated towel rail and vanity unit.

Outside there is a single garage with light and power. A block paved driveway and an outside light. The front garden is turfed.

HOMES OF QUALITY & STYLE

Get in touch

Sales Office: 01522 526025 | Head Office: 01522 512200

Email: info@taylorlindseyhomes.co.uk | www.taylorlindseyhomes.co.uk

**THE _____
ROMSEY**
3 BEDROOM HOUSE

Features include:

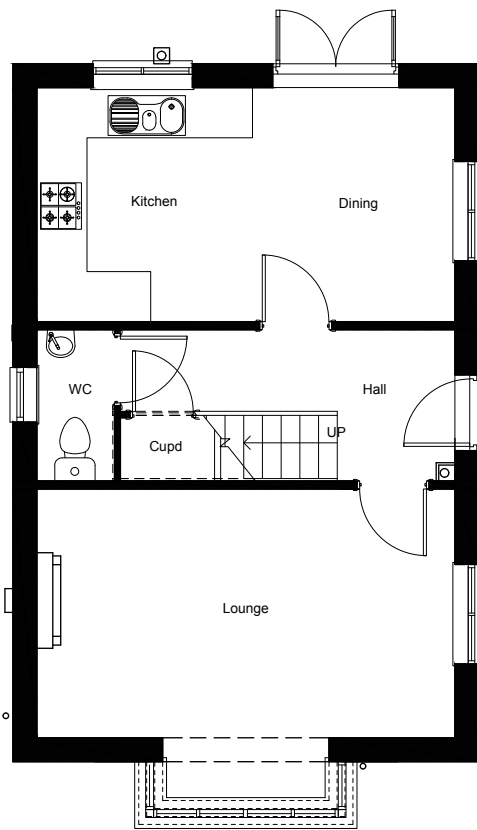
- Designer Sheraton Kitchen with Zanussi Appliances including Double Oven and Induction Hob, Dishwasher, Washer Dryer and Fridge Freezer
- Grade A Condensing Boiler
- Porcelanosa Tiling to Bathroom and En-Suite walls, Kitchen/Dining and Cloakroom Floor
- Intruder Alarm
- PVCu Secure by Design standard Windows and Doors
- Garage with Power and Light and Block Paved Driveway
- Turfed front Garden
- Fire



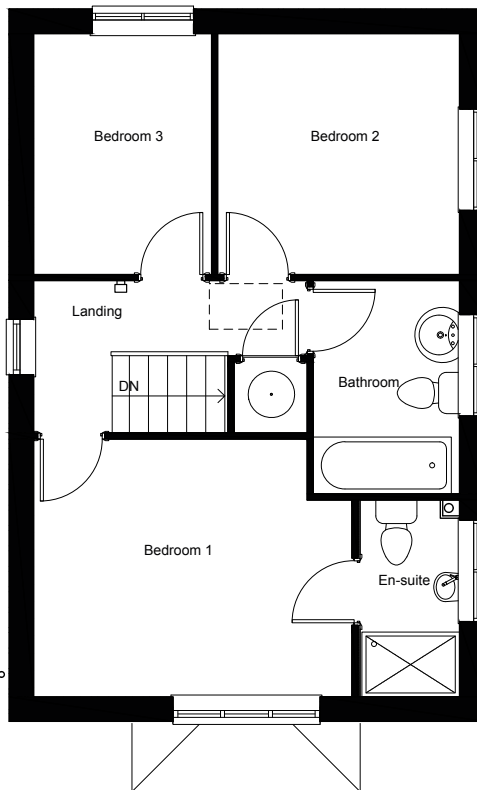
THE ROMSEY

3 BEDROOM HOUSE

GROUND FLOOR



FIRST FLOOR



MINSTER FIELDS LINCOLN

3 Bedrooms | Garage
Lounge | Kitchen/Dining | Entrance Hall
Bathroom | Master En-suite

Ground Floor

Lounge	17'1" x 12'8"	5.20m x 3.86m
Kitchen/ Dining	17'1" x 9'4"	5.20m x 2.85m

First Floor

Bedroom 1	12'9" x 10'4"	3.88m x 3.14m
En-suite	7'10" x 3'10"	2.38m x 1.17m
Bedroom 2	9'8" x 9'7"	2.94m x 2.93m
Bedroom 3	9'8" x 7'0"	2.94m x 2.15m
Bathroom	8'5" x 5'9"	2.57m x 1.75m

Illustrations are for indicative purposes only. Changes may be made without prior notice. All dimensions shown on this brochure are approximate and intended for guidance only.

HOMES OF QUALITY & STYLE

Get in touch

Sales Office: 01522 526025 | Head Office: 01522 512200

Email: info@taylorlindseyhomes.co.uk | www.taylorlindseyhomes.co.uk

