



# The Easby

## 4 Bedroom Detached House (Corner Plot)

*Castle Park is ideally located close to Sleaford town centre and has excellent transport connections to the nearby towns of Lincoln and Grantham. Local schooling is highly regarded and the town centre benefits from an excellent range of amenities.*

### **The Easby - a four bedroom detached home**

This detached home enjoys a large spacious lounge with fire and surround with french doors leading onto the outside patio area and rear garden. The modern kitchen with integrated appliances also offers a stylish dining area. Upstairs the master bedroom features en-suite facilities with an additional three bedrooms and family bathroom.

- Entrance Hall • Lounge • Kitchen/Dining • Downstairs WC • Bathroom
- 4 Bedrooms with Master En-suite • Double Garage • Fully Fitted Kitchen
- Integrated Hob, Double Oven and Extractor • Integrated Fridge/Freezer
- Integrated Dishwasher • Integrated Washing Machine • Fire and Fire Surround
- Fully Tiled Bathroom and En-suite • Alarm • Turf to Front Garden

Sales Office: 01529 306 398

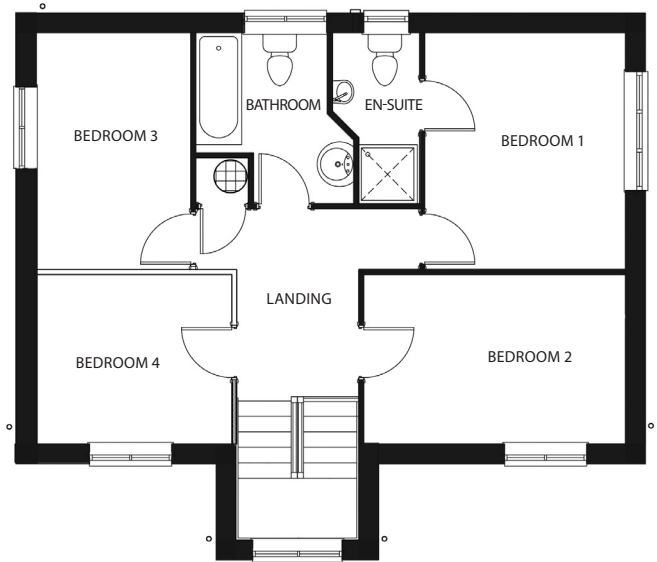
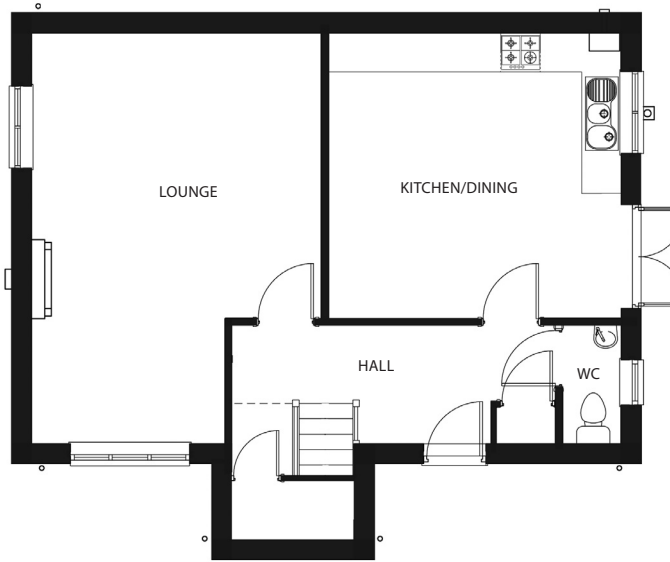
Head Office: 01522 512 200

[www.taylorlindseyhomes.co.uk](http://www.taylorlindseyhomes.co.uk)



Homes of **Quality** and **Style**

# The Easby 4 Bedroom Detached House (Corner Plot)



Ground Floor

First Floor

## GROUND FLOOR DIMENSIONS

Lounge (Max)	6.20m x 4.36m	20' 4" x 14' 3"
Kitchen/Dining	4.36m x 4.26m	14' 3" x 13' 11"

## FIRST FLOOR DIMENSIONS

Bedroom 1	3.56m x 3.01m	11' 8" x 9' 10"
Bedroom 2	3.86m x 2.53m	12' 8" x 8' 3"
Bedroom 3	3.56m x 2.31m	11' 8" x 7' 7"
Bedroom 4	2.53m x 3.03m	8' 3" x 9' 11"
Bathroom	2.55m x 1.95m	8' 4" x 6' 4"



- 4 Bedroom Detached
- Entrance Hall
- Downstairs WC
- Lounge
- Kitchen/Dining
- Bathroom
- Double Garage

Illustrations are for indicative purposes only. Changes may be made without prior notice. All dimensions shown on this brochure are approximate and intended for guidance only.

Sales Office: 01529 306 398  
 Head Office: 01522 512 200  
[www.taylorlindseyhomes.co.uk](http://www.taylorlindseyhomes.co.uk)



Homes of Quality and Style